



**National Institute of
Securities Markets**

A Capacity Building Initiative of SEBI



SUMMER PLACEMENT REPORT

2025-27

Post Graduate Diploma in Management
(Securities Markets)



www.nism.ac.in



NISM Campus, Patalganga
Raigad, Maharashtra - 410222



placements@nism.ac.in

TABLE OF CONTENTS

SR NO	CONTENTS	PAGE NO
1 >	Placement Highlights 	1
2 >	Sector Wise Placement Analysis 	2
3 >	Educational Background, Diversity and Experience Profile 	3
4 >	Our Esteemed Recruiters 	4
5 >	Placement Committee 	5



**National Institute of
Securities Markets**
A Capacity Building Initiative of SEBI

INTERNSHIP HIGHLIGHTS

The summer placement season for the **PGDM SM 2025-27** Batch.



Batch Size

111



100%

Summer Placements
Achieved



Recruiters

53



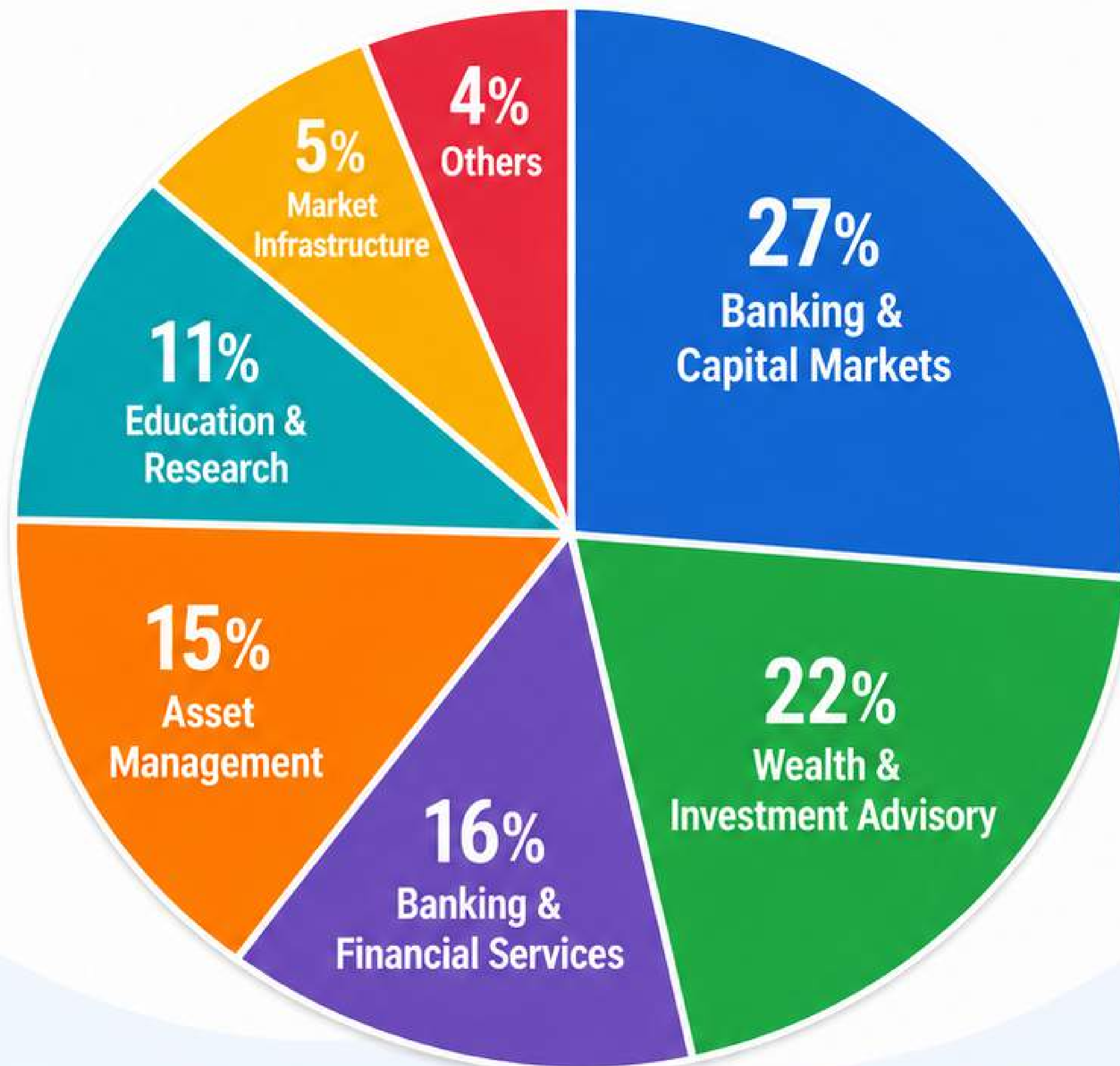
Highest Stipend
Offered

₹40,000

PER MONTH

SECTOR-WISE INTERNSHIP ANALYSIS

PGDM (Securities Markets) Batch 2025-27

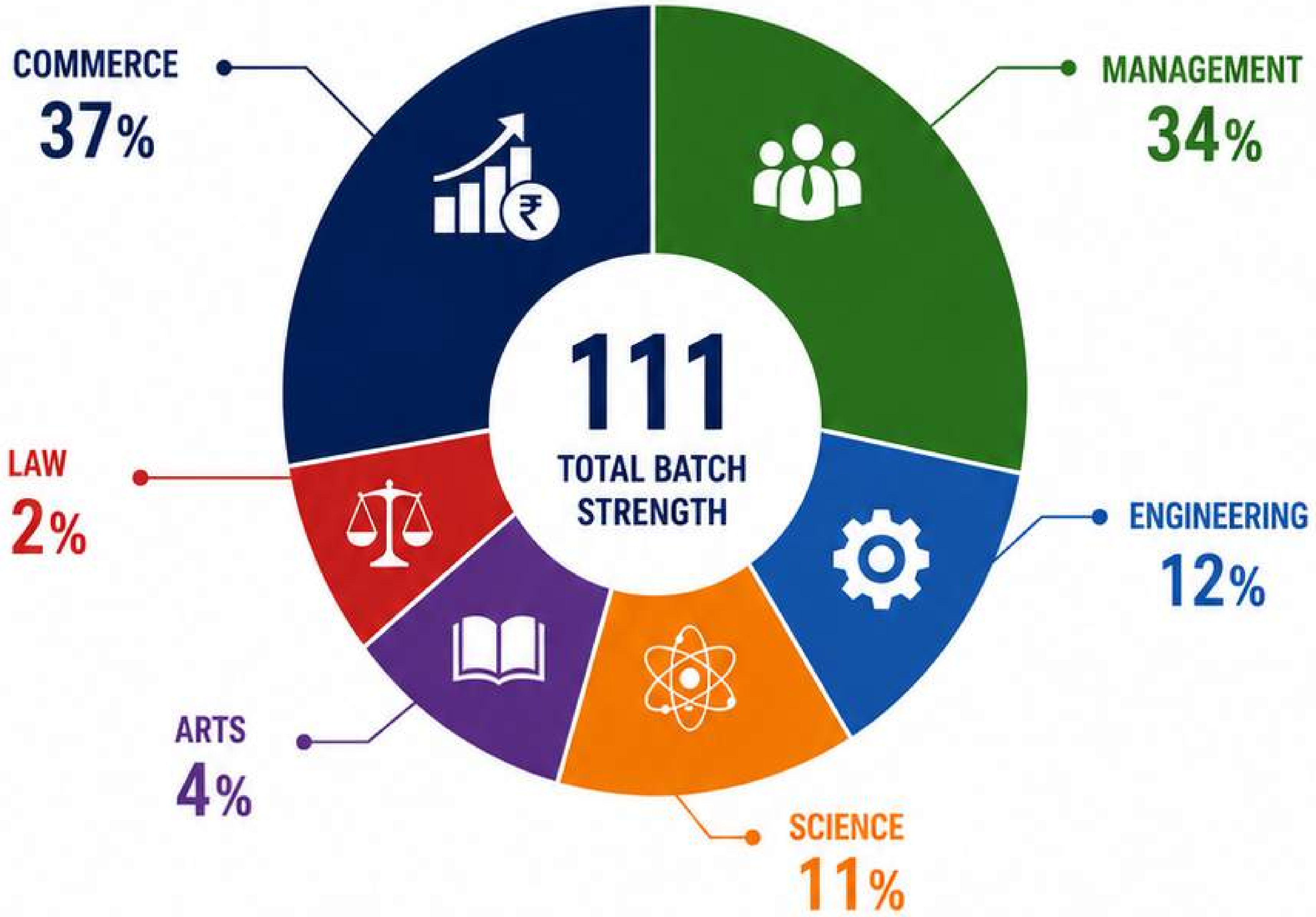


Note: Percentages may not add up to 100% due to rounding off.

Batch Strength: **111** Students

EDUCATIONAL BACKGROUND

PGDM (Securities Markets) Batch 2025-27

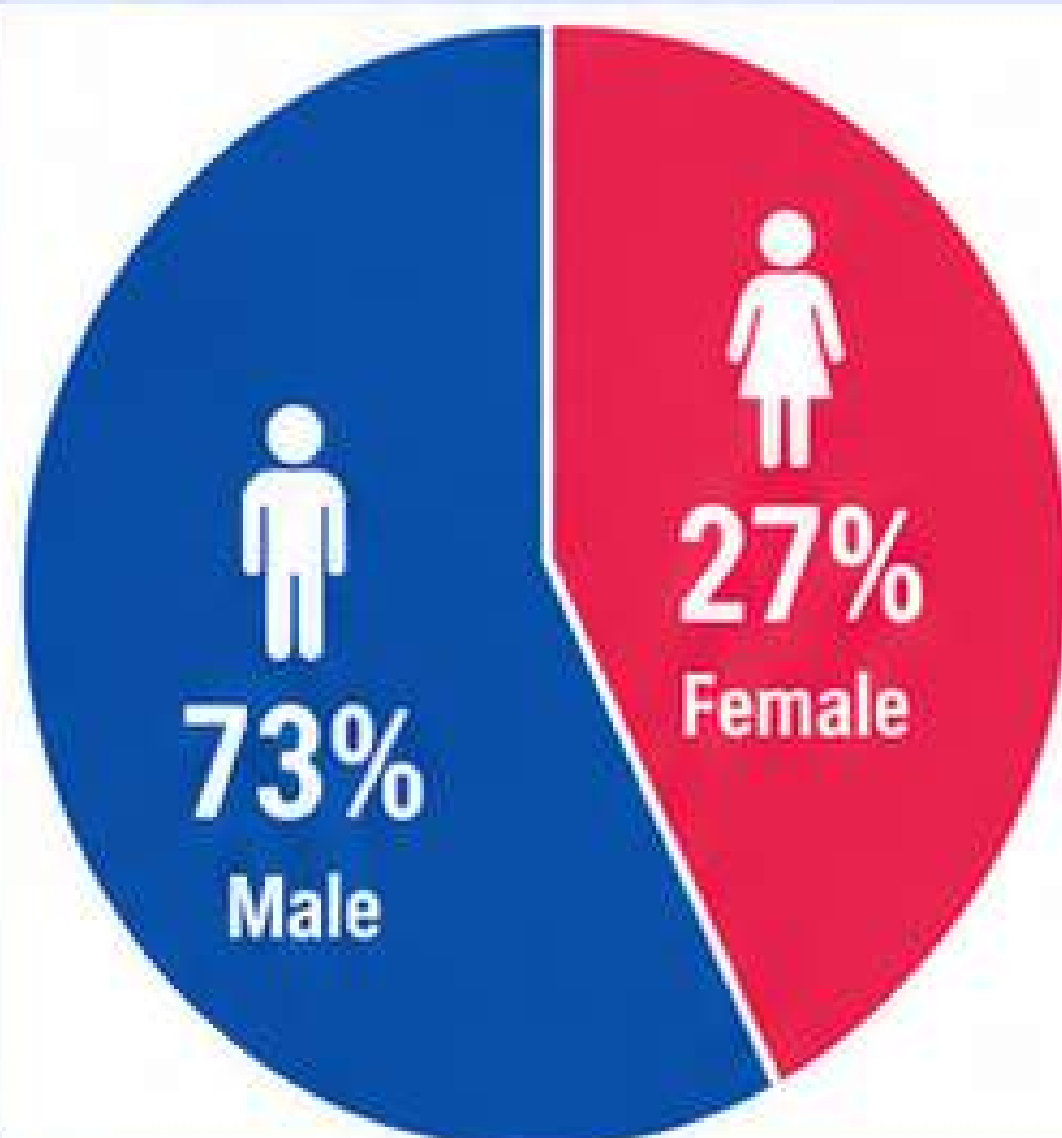


Diverse academic backgrounds creating a strong talent pool for financial markets, investment management, banking and securities services.

DIVERSITY & EXPERIENCE PROFILE



GENDER DIVERSITY

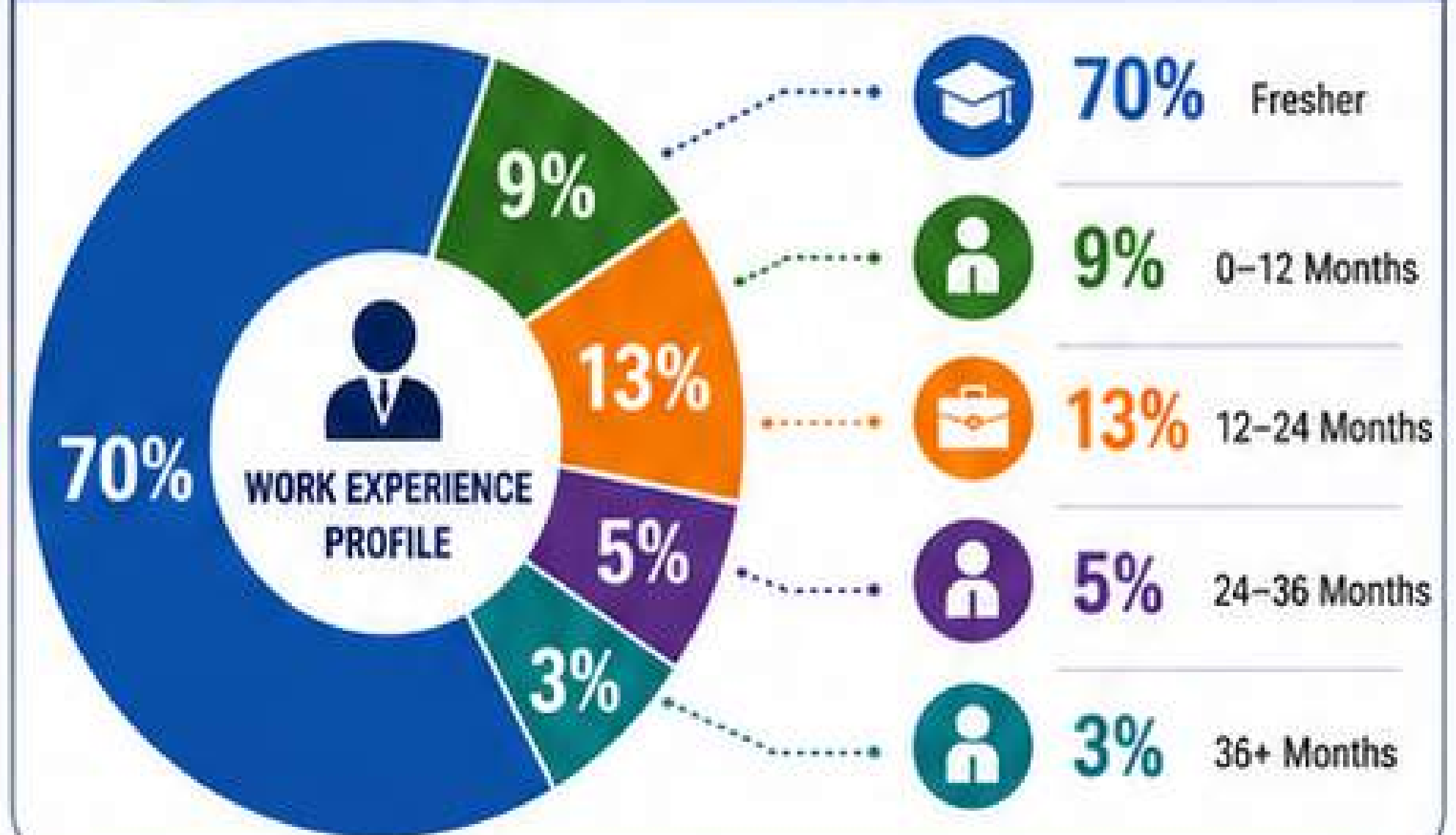


TOTAL BATCH STRENGTH

111
Students



WORK EXPERIENCE PROFILE



Our Esteemed Recruiters

 NSE	 CDSL Convenient • Dependable • Secure	 NSE COGENCIS	 HDFC BANK	 IDBI trustee IDBI Trusteeship Services Ltd
 Union Bank of India	 ADITYA BIRLA CAPITAL ASSET MANAGEMENT	 AXIS ASSET MANAGEMENT	 IDBI BANK	 SBICAPS Complete Investment Banking Solutions
 HDFC ASSET MANAGEMENT COMPANY LIMITED	 canmoney Save and borrow digitally	 JM Financial	 ICICI Lombard — GENERAL INSURANCE —	 LOKIA SECURITIES LTD.
 IIFL SECURITIES	 Abakkus Believe in the Basics	 uti UTI Mutual Fund	 ArihantCapital Generating Wealth	 SBI MUTUAL FUND A PARTNER FOR LIFE
 Reliance Industries Limited	 kotak Kotak Mahindra Bank	 LiveLing WEALTH	 Aditya Birla Sun Life Mutual Fund	 भारतीय रिजर्व बैंक RESERVE BANK OF INDIA
 SBI Securities Investment our Trust, Dono	 OPTRAIT FINANCIAL SOLUTIONS	 NALCO A Navratna Company	 finserve	 Vakya
 Bonanza make money, not mistakes.	 finanvo	 SB	 TradeShala	 SAMCO MUTUAL FUND BHAROSE KA PARTNER
MAGADH CAPITAL	 360° wealth advice		 BROKING Simplifying Investments	 CareerToppers
 SYSTEMATIX GROUP Investments Re-defined	 Trineta Asset Managers	 Federal Bank	 INDOBDYS	 TIKONA CAPITAL
 FIN QUANT	 Sharewealth THE WEALTH CREATOR	 BSPHCL	 MC³	 SES Stakeholders Empowerment Services Analyze » Educate » Empower
 EXECUTIVE GROUP	 earlyedge			




PLACEMENT COMMITTEE



Mr. Nikhil Shinde

(HOD – Placement)

National Institute of
Securities Markets (NISM)

 **Mobile:** +91-8080969596


 **Email:** nikhil.shinde@nism.ac.in




Ms. Reshma Shaikh

Senior Manager – Placement

National Institute of
Securities Markets (NISM)

 **Mobile:** +91-8976414697


 **Email:** reshma.shaikh@nism.ac.in



Mr. Sanket Ahire

Manager – Placement

National Institute of
Securities Markets (NISM)

 **Mobile:** +91-9029179499

 **Email:** sanket.ahire@nism.ac.in

PLACEMENT OFFICE



Placement

National Institute of Securities Markets (NISM)



Official Correspondence Email:

placement@nism.ac.in



Campus Address:

National Institute of Securities Markets (NISM)
Campus Plot No. IS-1 & IS-2,
Patalganga Industrial Area, Mohopada,
District Raigad, Maharashtra – 410222, India

